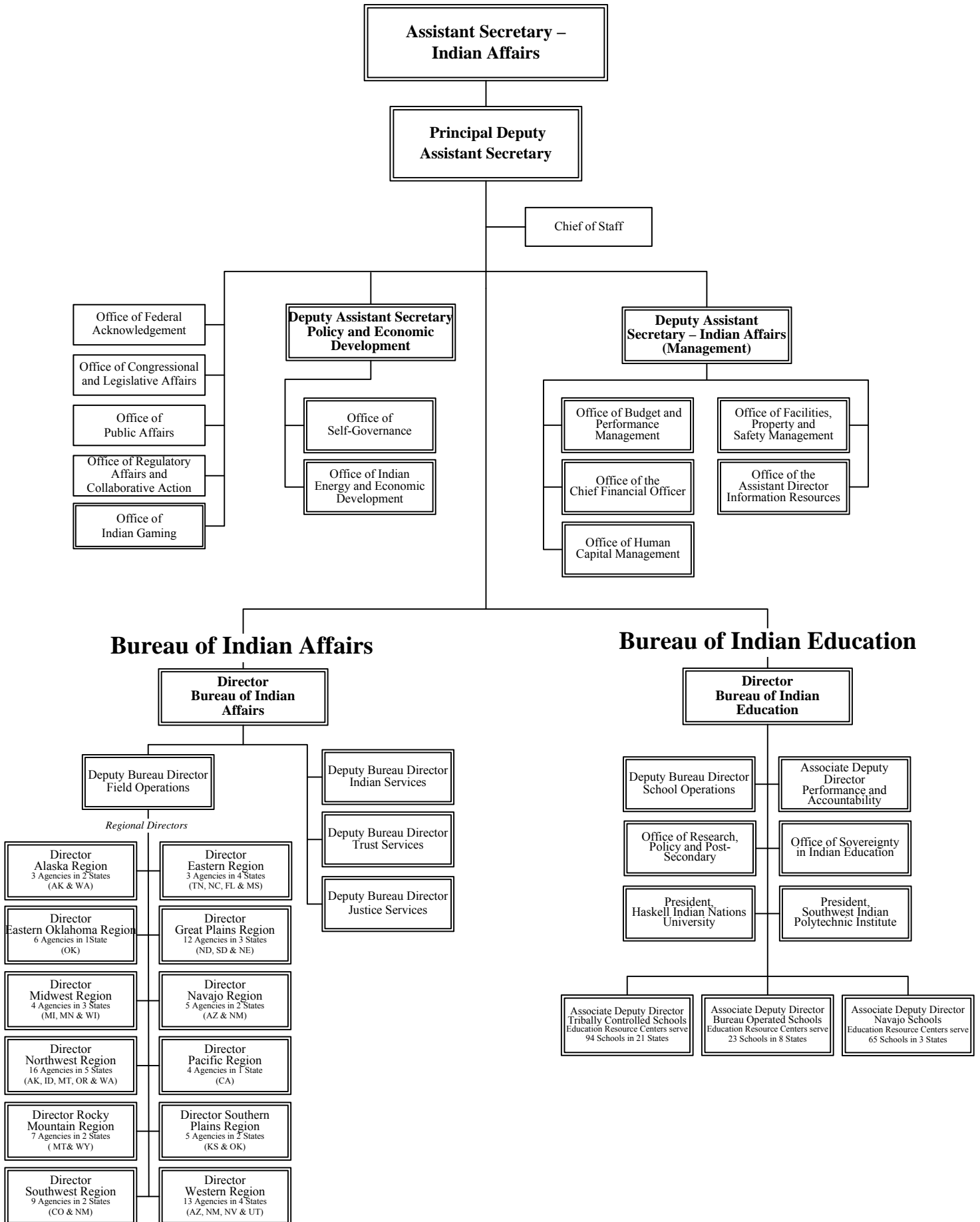


INDIAN AFFAIRS



INDIAN AFFAIRS
2017 BUDGET COMPARISON TABLE
(Dollars in thousands)

INDIAN AFFAIRS	2015 Enacted	2016 Enacted	Internal Transfers	Fixed Costs	Program Changes	2017 President's Budget Request	Change from 2016	TPA	CENTRAL	REGIONAL	OTHER PROGRAMS/ PROJECTS
OPERATION OF INDIAN PROGRAMS											
BUREAU OF INDIAN AFFAIRS											
TRIBAL GOVERNMENT											
Aid to Tribal Government (TPA)	24,614	24,833	2,213	72		27,118	2,285	27,118			
Consolidated Tribal Gov't Program (TPA)	76,348	77,088	-1,736	77		75,429	-1,659	75,429			
Self Governance Compacts (TPA)	158,767	162,321	-311	336		162,346	25	162,346			
Contract Support (TPA)	246,000										
Indian Self-Determination Fund (TPA)	5,000										
New Tribes (TPA)	463	464	-464				-464				
Small & Needy Tribes (TPA)	1,845	1,845			1,250	3,095	1,250	3,095			
Road Maintenance (TPA)	26,461	26,693		90		26,783	90	26,783			
Tribal Government Program Oversight	8,181	8,273	60	44	4,000	12,377	4,104		4,581	7,796	
Central Oversight	2,548	2,569		12	2,000	4,581	2,012		4,581		
Regional Oversight	5,633	5,704	60	32	2,000	7,796	2,092			7,796	
Total, Tribal Government	547,679	301,517	-238	619	5,250	307,148	5,631	294,771	4,581	7,796	
HUMAN SERVICES											
Social Services (TPA)	40,871	45,179	-240	104	12,300	57,343	12,164	57,343			
Welfare Assistance (TPA)	74,809	74,791	-18			74,773	-18	74,773			
Indian Child Welfare Act (TPA)	15,433	15,641	-108	13	3,400	18,946	3,305	18,946			
Housing Program (TPA)	8,009	8,021	-14	1	1,700	9,708	1,687	9,708			
Human Services Tribal Design (TPA)	407	246	7	1		254	8	254			
Human Services Program Oversight	3,105	3,126	-1	12		3,137	11		916	2,221	
Central Oversight	907	912		4		916	4		916		
Regional Oversight	2,198	2,214	-1	8		2,221	7			2,221	
Total, Human Services	142,634	147,004	-374	131	17,400	164,161	17,157	161,024	916	2,221	
TRUST - NATURAL RESOURCES MANAGEMENT											
Natural Resources (TPA)	5,089	5,168	-228	13	3,000	7,953	2,785	7,953			
Irrigation Operations and Maintenance	11,359	11,398		7	1,500	12,905	1,507				12,905
Rights Protection Implementation	35,420	37,638		23	2,500	40,161	2,523				40,161
Tribal Management/Development Program	9,244	9,263		3	5,000	14,266	5,003				14,266
Endangered Species	2,675	2,684		1	1,000	3,685	1,001				3,685
Tribal Climate Resilience	9,948	9,955		1	3,100	13,056	3,101				13,056
Integrated Resource Info Program	2,996	2,996			1,000	3,996	1,000				3,996
Agriculture & Range	30,494	30,751	-77	95		30,769	18	23,999			6,770
Agriculture Program (TPA)	23,730	23,982	-77	94		23,999	17	23,999			
Invasive Species	6,764	6,769		1		6,770	1				6,770
Forestry	47,735	51,914	99	142		52,155	241	27,852			24,303
Forestry Program (TPA)	27,526	27,643	99	110		27,852	209	27,852			
Forestry Projects	20,209	24,271		32		24,303	32				24,303
Water Resources	10,297	10,367	70	13	4,550	15,000	4,633	3,972			11,028
Water Resources Program (TPA)	3,845	3,898	70	4		3,972	74	3,972			
Water Mgmt., Planning & PreDevelopment	6,452	6,469		9	4,550	11,028	4,559				11,028
Fish, Wildlife and Parks	13,577	13,646	3	9	2,000	15,658	2,012	5,278			10,380
Wildlife & Parks Program (TPA)	5,220	5,268	3	7		5,278	10	5,278			
Fish, Wildlife & Parks Projects	8,357	8,378		2	2,000	10,380	2,002				10,380

INDIAN AFFAIRS
2017 BUDGET COMPARISON TABLE
(Dollars in thousands)

INDIAN AFFAIRS	2015 Enacted	2016 Enacted	Internal Transfers	Fixed Costs	Program Changes	2017 President's Budget Request	Change from 2016	TPA	CENTRAL	REGIONAL	OTHER PROGRAMS/ PROJECTS
Resource Management Program Oversight	6,018	6,066	-101	28		5,993	-73		1,732	4,261	
Central Oversight	1,809	1,823	-100	9		1,732	-91		1,732		
Regional Oversight	4,209	4,243	-1	19		4,261	18			4,261	
Total, Trust-Natural Resources Management	184,852	191,846	-234	335	23,650	215,597	23,751	69,054	1,732	4,261	140,550
TRUST - REAL ESTATE SERVICES											
Trust Services (TPA)	15,150	15,043	6	29	-6,893	8,185	-6,858	8,185			
Navajo-Hopi Settlement Program	1,147	1,160		6		1,166	6				1,166
Probate (TPA)	12,043	11,928	21	90	1,000	13,039	1,111	13,039			
Land Title and Records Offices	13,891	13,905	-26	102	2,000	15,981	2,076			15,981	
Real Estate Services	36,435	36,837	-1	234		37,070	233	34,273			2,797
RES Program (TPA)	33,642	34,040	-1	234		34,273	233	34,273			
RES Projects	2,793	2,797				2,797					2,797
Land Records Improvement	6,436	6,439		2	1,850	8,291	1,852		6,351	1,940	
LRI - Central	4,500	4,500		1	1,850	6,351	1,851		6,351		
LRI - Regional	1,936	1,939		1		1,940	1			1,940	
Environmental Quality	15,644	15,792	79	33		15,904	112	2,782			13,122
EQ Program (TPA)	2,586	2,692	79	11		2,782	90	2,782			
EQ Projects	13,058	13,100		22		13,122	22				13,122
Alaskan Native Programs	1,010	1,017		3		1,020	3	1,020			
Alaskan Native Programs (TPA)	1,010	1,017		3		1,020	3	1,020			
Rights Protection	11,803	11,845		20	8,150	20,015	8,170	2,008		169	17,838
Rights Protection (TPA)	1,971	1,996		12		2,008	12	2,008			
Water Rights Negotiations/Litigation	8,166	8,180		8	7,750	15,938	7,758				15,938
Litigation Support/Attny Fees	1,500	1,500			400	1,900	400				1,900
Other Indian Rights Protection	166	169				169				169	
Trust - Real Estate Services Oversight	13,443	13,520	-61	62	2,000	15,521	2,001		3,201	12,320	
Central Oversight	3,264	3,288	-100	13		3,201	-87		3,201		
Regional Oversight	10,179	10,232	39	49	2,000	12,320	2,088			12,320	
Total, Trust-Real Estate Services	127,002	127,486	18	581	8,107	136,192	8,706	61,307	9,552	30,410	34,923
PUBLIC SAFETY AND JUSTICE											
Law Enforcement	328,296	347,976	-200	716	-7,211	341,281	-6,695		5,978		335,303
Criminal Investigations and Police Services	192,824	197,504		432		197,936	432				197,936
Detention/Corrections	94,483	95,305		202	1,000	96,507	1,202				96,507
Inspections/Internal Affairs	3,433	3,462		13		3,475	13				3,475
Law Enforcement Special Initiatives	8,255	11,305		14		11,319	14				11,319
Indian Police Academy	4,716	4,853		9		4,862	9				4,862
Tribal Justice Support	5,237	16,245		5	-8,211	8,039	-8,206				8,039
Law Enforcement Program Management	6,250	6,161	-200	17		5,978	-183		5,978		
Facilities Operations & Maintenance	13,098	13,141		24		13,165	24				13,165
Tribal Courts (TPA)	23,280	28,173	-46	26	2,600	30,753	2,580	30,753			
Fire Protection (TPA)	1,274	1,274	150	2		1,426	152	1,426			
Total, Public Safety and Justice	352,850	377,423	-96	744	-4,611	373,460	-3,963	32,179	5,978		335,303

INDIAN AFFAIRS
2017 BUDGET COMPARISON TABLE
(Dollars in thousands)

INDIAN AFFAIRS	2015 Enacted	2016 Enacted	Internal Transfers	Fixed Costs	Program Changes	2017 President's Budget Request	Change from 2016	TPA	CENTRAL	REGIONAL	OTHER PROGRAMS/ PROJECTS
COMMUNITY and ECONOMIC DEVELOPMENT											
Job Placement and Training (TPA)	11,463	11,445	55	4	1,000	12,504	1,059	12,504			
Economic Development (TPA)	1,706	1,794	5	2		1,801	7	1,801			
Minerals and Mining	20,612	25,153	-41	44	148	25,304	151	4,063	5,374	898	14,969
Minerals & Mining Program (TPA)	3,912	3,940	-41	16	148	4,063	123	4,063			
Minerals & Mining Projects	14,924	14,953		16		14,969	16				14,969
Minerals & Mining Central Oversight	860	5,369		5		5,374	5		5,374		
Minerals & Mining Regional Oversight	916	891		7		898	7			898	
Community Development Oversight	2,215	2,227		8	1,000	3,235	1,008		3,235		
Central Oversight	2,215	2,227		8	1,000	3,235	1,008		3,235		
Total, Community and Economic Development	35,996	40,619	19	58	2,148	42,844	2,225	18,368	8,609	898	14,969
EXECUTIVE DIRECTION and ADMINISTRATIVE SERVICES											
Assistant Secretary Support	11,135	11,245		61	12,000	23,306	12,061		23,306		
Executive Direction	18,602	19,723	537	104		20,364	641	15,041	2,040	3,283	
Executive Direction (TPA)	14,069	14,947	19	75		15,041	94	15,041			
Executive Direction (Central)	1,624	1,632	400	8		2,040	408		2,040		
Executive Direction (Regional)	2,909	3,144	118	21		3,283	139			3,283	
Administrative Services	48,968	49,125	14	244		49,383	258	12,629	22,466	14,288	
Administrative Services (TPA)	12,735	12,596	-44	77		12,629	33	12,629			
Administrative Services (Central)	22,236	22,377		89		22,466	89		22,466		
Administrative Services (Regional)	13,997	14,152	58	78		14,288	136			14,288	
Safety and Risk Management	1,644	1,660		10	1,300	2,970	1,310		749	2,221	
Central Safety & Risk Management	737	744		5		749	5		749		
Regional Safety Management	907	916		5	1,300	2,221	1,305			2,221	
Information Resources Technology	44,307	44,461		84		44,545	84				44,545
Information Resources Technology	44,307	44,461		84		44,545	84				44,545
Human Capital Management	25,264	25,461		-571		24,890	-571		10,696		14,194
Human Resources	10,518	10,629		67		10,696	67		10,696		
Labor-Related Payments	14,746	14,832		-638		14,194	-638				14,194
Facilities Management	17,154	17,294		79		17,373	79				17,373
Regional Facilities Management	3,678	3,715		21		3,736	21				3,736
Operations and Maintenance	13,476	13,579		58		13,637	58				13,637
Intra-Governmental Payments	23,462	24,016		-634	170	23,552	-464				23,552
Rentals [GSA/Direct]	37,156	36,677		894		37,571	894				37,571
Total, Executive Direction & Administrative Svcs	227,692	229,662	551	271	13,470	243,954	14,292	27,670	59,257	19,792	137,235
TOTAL, BUREAU OF INDIAN AFFAIRS	1,618,705	1,415,557	-354	2,739	65,414	1,483,356	67,799	664,373	90,625	65,378	662,980

INDIAN AFFAIRS
2017 BUDGET COMPARISON TABLE
(Dollars in thousands)

INDIAN AFFAIRS	2015 Enacted	2016 Enacted	Internal Transfers	Fixed Costs	Program Changes	2017 President's Budget Request	Change from 2016	TPA	CENTRAL	REGIONAL	OTHER PROGRAMS/ PROJECTS
BUREAU OF INDIAN EDUCATION											
Elementary and Secondary (forward funded)	536,897	553,458		2,058	18,559	574,075	20,617				574,075
ISEP Formula Funds	386,565	391,837		1,886	6,500	400,223	8,386				400,223
ISEP Program Adjustments	5,353	5,401		11		5,412	11				5,412
Education Program Enhancements	12,119	12,182		19	2,000	14,201	2,019				14,201
Tribal Education Departments	2,000	2,000				2,000					2,000
Student Transportation	52,945	53,142		103	4,000	57,245	4,103				57,245
Early Child and Family Development	15,520	15,620		39	4,000	19,659	4,039				19,659
Tribal Grant Support Costs	62,395	73,276			2,059	75,335	2,059				75,335
Elementary/Secondary Programs	119,195	134,263	152	280	9,600	144,295	10,032	18,533			125,762
Facilities Operations	55,865	63,098		121	3,000	66,219	3,121				66,219
Facilities Maintenance	48,591	55,887		156	3,000	59,043	3,156				59,043
Juvenile Detention Center Education		500				500					500
Johnson-O'Malley Assistance Grants (TPA)	14,739	14,778	152	3	3,600	18,533	3,755	18,533			
Post Secondary Programs (forward funded)	69,793	74,893	6,911	3	-4,600	77,207	2,314				77,207
Tribal Colleges and Universities (forward funded)	69,793	69,793				69,793					69,793
Tribal Technical Colleges (forward funded)		5,100	6,911	3	-4,600	7,414	2,314				7,414
Post Secondary Programs	64,182	64,602	-6,709	138	8,810	66,841	2,239	39,282			27,559
Haskell and SIPI	19,767	19,990		127	2,000	22,117	2,127				22,117
Tribal Colleges and Universities Supplements (TPA)	1,219	1,219				1,219		1,219			
Tribal Technical Colleges	6,814	6,911	-6,911				-6,911				
Scholarships and Adult Education (TPA)	31,190	31,290	202	11	6,560	38,063	6,773	38,063			
Special Higher Education Scholarships	2,742	2,742			250	2,992	250				2,992
Science Post Graduate Scholarship Fund	2,450	2,450				2,450					2,450
Education Management	20,464	25,151		72	24,789	50,012	24,861		24,936		25,076
Education Program Management	14,186	16,868		68	8,000	24,936	8,068		24,936		
Education IT	6,278	8,283		4	16,789	25,076	16,793				25,076
TOTAL, BUREAU OF INDIAN EDUCATION	810,531	852,367	354	2,551	57,158	912,430	60,063	57,815	24,936		829,679
TOTAL, OIP	2,429,236	2,267,924		5,290	122,572	2,395,786	127,862	722,188	115,561	65,378	1,492,659
CONTRACT SUPPORT COSTS											
Contract Support		272,000			1,000	273,000	1,000				
Indian Self-Determination Fund		5,000				5,000					
TOTAL, CONTRACT SUPPORT COSTS		277,000			1,000	278,000	1,000				

INDIAN AFFAIRS
2017 BUDGET COMPARISON TABLE
(Dollars in thousands)

INDIAN AFFAIRS	2015 Enacted	2016 Enacted	Internal Transfers	Fixed Costs	Program Changes	2017 President's Budget Request	Change from 2016	TPA	CENTRAL	REGIONAL	OTHER PROGRAMS/ PROJECTS
CONSTRUCTION											
EDUCATION CONSTRUCTION											
Replacement School Construction	20,165	45,504				45,504					
Replacement Facility Construction		11,935				11,935					
Employee Housing Repair	3,823	7,565			2	7,567	2				
Facilities Improvement and Repair	50,513	73,241			10	73,251	10				
Total, Education Construction	74,501	138,245			12	138,257	12				
PUBLIC SAFETY AND JUSTICE CONSTRUCTION											
Employee Housing	3,494	3,494				3,494					
Facilities Improvement and Repair	4,372	4,372				4,372					
Fire Safety Coordination	166	166				166					
Fire Protection	3,274	3,274				3,274					
Total, Public Safety and Justice Construction	11,306	11,306				11,306					
RESOURCES MANAGEMENT CONSTRUCTION											
Irrigation Project Construction:	6,000	6,004			2	6,006	2				
Navajo Indian Irrig. Project	3,388	3,392			2	3,394	2				
Irrigation Projects-Rehabilitation	2,612	2,612				2,612					
Engineering and Supervision	2,058	2,072			6	2,078	6				
Survey and Design	292	292				292					
Federal Power Compliance [FERC]	637	641			2	643	2				
Dam Projects:	25,440	25,479			15	27,494	2,015				
Safety of Dams	23,526	23,557			12	25,569	2,012				
Dam Maintenance	1,914	1,922			3	1,925	3				
Total, Resources Management Construction	34,427	34,488			25	36,513	2,025				
OTHER PROGRAM CONSTRUCTION											
Telecommunications Improvement & Repair	856	856				856					
Facilities/Quarters Improvement and Repair	1,171	1,171				2,171	1,000				
Construction Program Management	6,615	7,907			7	7,914	7				
[Ft. Peck Water System]	[750]	[2,000]				[2,000]					
Total, Other Program Construction	8,642	9,934			7	10,941	1,007				
TOTAL, CONSTRUCTION	128,876	193,973			44	197,017	3,044				
INDIAN LAND & WATER CLAIM SETTLEMENTS & MISCELLANEOUS PAYMENTS TO INDIANS											
Land Settlements:											
White Earth Land Settlement Act (Adm.)	625	625				625					
Hoopa-Yurok Settlement	250	250				250					
Yurok Land Settlement Acquisition						10,000	10,000	10,000			
Water Settlements:											
Pyramid Lake Water Rights Settlement	142	142				142					
Navajo Water Resources Development Trust Fund	4,000	4,000				4,000					
Navajo-Gallup Water Supply Project	9,000	9,000				6,130	15,130	6,130			
Taos Pueblo	15,392	29,212				-29,212	-29,212				
Aamodt	6,246	6,246				18,762	25,008	18,762			
TOTAL, SETTLEMENTS/MISC. PAYMENTS	35,655	49,475				5,680	55,155	5,680			

INDIAN AFFAIRS
2017 BUDGET COMPARISON TABLE
(Dollars in thousands)

INDIAN AFFAIRS	2015 Enacted	2016 Enacted	Internal Transfers	Fixed Costs	Program Changes	2017 President's Budget Request	Change from 2016	TPA	CENTRAL	REGIONAL	OTHER PROGRAMS/ PROJECTS
INDIAN GUARANTEED LOAN PROGRAM											
Subsidies	6,686	6,686				6,686					
Program Management	1,045	1,062		9		1,071	9				
TOTAL, INDIAN GUARANTEED LOAN PROGRAM	7,731	7,748		9		7,757	9				
TOTAL, DIRECT APPROPRIATED FUNDS	2,601,498	2,796,120		5,343	132,252	2,933,715	137,595	722,188	115,561	65,378	1,492,659

2-yr OIP	1,778,993	1,595,760	-6,897	3,130	104,663	1,696,656	100,896	685,697	109,210	63,438	838,311
Fwd Funded OIP [15 month] ^{2/}	606,690	628,351	6,911	2,061	13,959	651,282	22,931				651,282
No-yr OIP ^{1/}	43,553	43,813	-14	99	3,950	47,848	4,035	36,491	6,351	1,940	3,066
TOTAL, OIP	2,429,236	2,267,924		5,290	122,572	2,395,786	127,862	722,188	115,561	65,378	1,492,659
TOTAL, CONTRACT SUPPORT COSTS		277,000			1,000	278,000	1,000				
TOTAL, CONSTRUCTION	128,876	193,973		44	3,000	197,017	3,044				
TOTAL, SETTLEMENTS/MISC. PAYMENTS	35,655	49,475			5,680	55,155	5,680				
TOTAL, INDIAN GUARANTEED LOAN PROGRAM	7,731	7,748		9		7,757	9				
TOTAL, DIRECT APPROPRIATED FUNDS	2,601,498	2,796,120		5,343	132,252	2,933,715	137,595	722,188	115,561	65,378	1,492,659

Tribal Government (Dollars in thousands)							
Subactivity Program Element	2015 Enacted	2016 Enacted	FY 2017				Changes from 2016
			Internal Transfers	Fixed Costs	Program Changes	Budget Request	
Aid to Tribal Government (TPA) <i>FTE</i>	24,614 63	24,833 63	2,213	72		27,118 63	2,285
Consolidated Tribal Gov't Program (TPA) <i>FTE</i>	76,348	77,088	-1,736	77		75,429	-1,659
Self Governance Compacts (TPA) <i>FTE</i>	158,767	162,321	-311	336		162,346	25
Contract Support (TPA) <i>FTE</i>	246,000						
Indian Self-Determination Fund (TPA) <i>FTE</i>	5,000						
New Tribes (TPA) <i>FTE</i>	463	464	-464				-464
Small & Needy Tribes (TPA) <i>FTE</i>	1,845	1,845			1,250	3,095	1,250
Road Maintenance (TPA) <i>FTE</i>	26,461 112	26,693 112		90		26,783 112	90
Tribal Government Program Oversight	8,181	8,273	60	44	4,000	12,377	4,104
Central Oversight	2,548	2,569		12	2,000	4,581	2,012
Regional Oversight	5,633	5,704	60	32	2,000	7,796	2,092
<i>FTE</i>	60	60			4	64	4
Total Requirements <i>FTE</i>	547,679 235	301,517 235	-238	619	5,250 4	307,148 239	5,631 4

^{1/} Contract Support and Indian Self-Determination Fund funds were moved to a separate account starting in Fiscal Year 2016

Summary of 2017 Program Changes

Request Component	(\$000)	FTE
• Small & Needy Tribes (TPA)	+1,250	0
• Tribal Government Program Oversight		
• Central Oversight	+2,000	+2
• Regional Oversight	+2,000	+2
TOTAL, Program Changes	+5,250	+4

Justification of 2017 Program Changes:

The FY 2017 budget request for the Tribal Government activity is \$307,148,000, a net program change of +\$5,250,000 from the FY 2016 enacted level.

Small & Needy Tribes (TPA) (+\$1,250,000):

The increase in small and needy tribe funding will ensure all tribes have the base-level funding to run a government. The FY 2017 funding will enable small and needy tribes to receive an increase in funding

while still meeting the unique needs of their communities. As part of the budget consultation process, each tribe will be given the option of selecting, within an overall funding level, the amounts and types of the consolidated programs the tribe or the BIA will operate on the reservations during any budget year. If the tribe chooses to operate the program, they will do so with funds received under the Contract Support (TPA) fund. Ultimately, the combination of activities of similar character give tribes the most effective means of setting priorities and dealing with the operations of the programs consistent with Federal laws and regulations, as well as tribal goals and objectives.

Subactivity - Self Governance Compacts (TPA) (FY 2017: \$162,346,000; FTE: 0):

Self-Governance Compacts implement the Tribal Self-Governance Act of 1994 (P.L.103-413), by providing resources to new and existing self-governance tribes, enabling them to plan, conduct, consolidate, and administer programs, services, functions, and activities for tribal citizens according to priorities established by their tribal governments. Under tribal self-governance, tribes have greater control and flexibility in the use of these funds and reduced reporting requirements compared to tribes that contract under P.L. 93-638. However, self-governance tribes are subject to annual trust evaluations to monitor the performance of trust functions they perform. They are also subject to annual audits pursuant to the Single Audit Act Amendments (P.L. 104-156). In addition, most self-governance tribes have included language in their funding agreements indicating that they will work with BIA to provide applicable data and information pursuant to the Government Performance and Results Act of 1993. Tribal Self-governance funding is negotiated on the same basis as funding provided to tribes contracting under Title I of P.L. 93-638. Self-governance tribes are subject to the same incremental adjustments of base funding as non-compacting tribes. Also included in self-governance funding agreements are funds from other Federal programs allocated or awarded to self-governance tribes such as funds from the Department of Transportation, Federal Highway Administration, Indian Reservation Roads Program, Bureau of Land Management, the Department of Labor, and the Department of Health and Human Services under the Employment, Training, and Related Services Demonstration Act (P.L. 102-477).

Subactivity - New Tribes (TPA) (FY 2017: 0; FTE: 0):

The New Tribes sub-activity provides funding to support newly Federally-recognized tribes, newly Federally-acknowledged tribal governments, and minimum funding for BIA Regions or Agencies to provide support services for newly Federally-recognized tribes. This sub-activity provides \$160,000 in TPA base funding for new tribes to establish and carry out the day-to-day responsibilities of a tribal government. Once a tribe has been acknowledged as a Federally- recognized tribe, it remains in the “New Tribes” category for three (3) fiscal years. By the third year, new tribal governments will have built government systems and set funding priorities that address the needs of their communities. The New Tribes sub-activity helps foster strong and stable tribal governments and provides tribes with the funding resources it needs to fund their basic governmental affairs – which will put them in a better position to contract and compact BIA programs. This sub-activity, in addition to other cross-cutting programs, such as: Contract Support, the Indian Self-Determination Fund, and the Small and Needy Tribes sub-activities are dependent upon each other for meeting the goal of increasing contracting and compacting. If funding was not available, newly recognized tribes would have to wait until a new appropriation was enacted in order to establish the framework for a stable government.

Human Services (Dollars in thousands)							
Subactivity Program Element	2015 Enacted	2016 Enacted	FY 2017				Changes from 2016
			Internal Transfers	Fixed Costs	Program Changes	Budget Request	
Social Services (TPA)	40,871	45,179	-240	104	12,300	57,343	12,164
<i>FTE</i>	95	99			31	130	31
Welfare Assistance (TPA)	74,809	74,791	-18			74,773	-18
<i>FTE</i>							
Indian Child Welfare Act (TPA)	15,433	15,641	-108	13	3,400	18,946	3,305
<i>FTE</i>					1	1	1
Housing Program (TPA)	8,009	8,021	-14	1	1,700	9,708	1,687
<i>FTE</i>					1	1	1
Human Services Tribal Design (TPA)	407	246	7	1		254	8
<i>FTE</i>							
Human Services Program Oversight	3,105	3,126	-1	12		3,137	11
Central Oversight	907	912		4		916	4
Regional Oversight	2,198	2,214	-1	8		2,221	7
<i>FTE</i>	17	17				17	
Total Requirements	142,634	147,004	-374	131	17,400	164,161	17,157
<i>FTE</i>	112	116			33	149	33

Summary of 2017 Program Changes

Request Component	(\$000)	FTE
• Social Services (TPA)	+12,300	+31
• Indian Child Welfare Act (TPA)	+3,400	+1
• Housing Program (TPA)	+1,700	+1
TOTAL, Program Changes	+17,400	+33

Justification of 2017 Program Changes:

The FY 2017 budget request for the Human Services activity is \$164,161,000, a net program change of +\$17,400,000 from the FY 2016 enacted level.

Tiwahe Initiative (+\$17,400,000; +33 FTE)

In harmony with White House's Generation Indigenous, the Bureau of Indian Affairs (BIA) has developed the Tiwahe Initiative, a holistic approach to addressing overall tribal community needs by leveraging BIA programs that support youth, family, community safety and stability, and cultural awareness in concert with other federal programs.

Under Tiwahe, the BIA Offices of Indian Services and Justice Services are assisting selected sites in implementing a tribally driven comprehensive approach that creates a more effective and efficient comprehensive service delivery model. This includes improving screening, improving access to family and social services, creating alternatives to incarceration via solution-focused sentencing options,

improving links to appropriate prevention, intervention and treatment opportunities, improving case management services, and successfully improving the overall partnerships between local, tribal, county, state, and federal providers. This integrated service delivery model will improve overall access to services for tribal children, youth, and families. Effective interagency collaborations can augment human and material resources, share expertise among staff, expand services, reduce duplication efforts, and exchange information about families' needs in order to formulate the most responsive approach.

As part of the President's commitment to tribal communities, the Budget proposes a \$17.4 million increase to the Human Services budget activities related to the Tiwahe Initiative to provide additional funding to the growing number of Tiwahe sites to create and implement an effective and efficient coordinated service delivery model. .

The interagency collaborations will also augment scarce human and material resources, share expertise among staff, expand services, reduce duplication efforts, and exchange information about families' needs in order to formulate the most responsive approach.

Social Services (TPA) (+\$12,300,000; +31 FTE):

The proposed increase of \$12.3 million in Social Services (TPA) funding will increase the total number of Tiwahe sites to 10 and will provide additional resources to tribes and tribal organizations to build and enhance capacity within their Social Services program.

The proposed increase will expand the pool of tribal case workers dedicated to child welfare and child protection with the goal of decreasing client-to-staff ratios and improving the quality of services provided to children and families. Tribal social workers often are required to conduct collateral duties that span across multiple areas of social work beyond just child protection or child welfare. These responsibilities include: transporting clients to and from appointments; transporting clients to placements that are sometimes hours away from the reservation; conducting home visits; working one-on-one with foster families or Kinship Placements; and, working on permanency planning and providing outreach services to the tribal community.

The recruitment of more social workers will provide tribes the opportunity to address high caseloads and workloads due to the shortage of social workers in Indian country. Indian Affairs believes that the increased total amount of social workers will provide for an increase in the number of families that receive intensive family assistance and home improvement services. Indian Affairs also presumes that this focus will decrease the number of American Indian and Alaska Native (AI/AN) children removed from their families and communities.

It is critical to the success of Tribal Social Services programs and Tiwahe, that the social services case workers receive the core training disciplines of social services. To this end, Indian Affairs will also use the proposed increase to partner with accredited universities and colleges to recruit and train tribal social workers and child welfare case workers. Funding will also allow Indian Affairs to continue the enhancement and implementation of the Center for Excellence. The Center for Excellence gives tribes opportunities to continue learning, cross training, and to conduct information sharing in areas related to leadership, best practices, research, support and training. It serves as a platform that allows each tribe that has been selected to participate in Tiwahe an opportunity to train other tribes and tribal organizations on creating a coordinated service delivery model. The Tiwahe tribes will provide training through peer-to-

peer interactions and share their best practices and lessons learned from implementation of the Initiative. The goal is for other tribes to begin utilizing the additional social services funding under Tiwahe towards capacity building with a long-term goal of implementing a coordinated service delivery model in their communities.

Indian Affairs will partner with other federal agencies, including the Department of Health and Human Services, the Department of Justice, and the Department of Labor to assist tribes in accessing and leveraging other types of funding sources offered through these federal agencies and how to use these funding sources to enhance a coordinated service delivery system

Indian Child Welfare Act (TPA) (+\$3,400,000; +1 FTE):

Indian Affairs uses ICWA funding to ensure that the placement of AI/AN children in foster or adoptive homes that reflect the unique values of Indian culture. The \$3.4 million increase in ICWA will enhance tribal efforts in the operation of children and family service programs. This increase will give tribes the much needed financial resources to focus on preventive services such as family assistance and home improvement services. The increase will sustain existing staff at the Tribes and generate the employment of professional and other trained personnel to assist in areas such as domestic relations, family violence, alcohol and substance abuse and incarceration. The proposed increase will also establish an Indian Affairs ICWA position focused on providing training to tribes and state courts on ICWA regulations and working closely with tribal and federal partners on ICWA compliance.

Housing Program (TPA) (+\$1,700,000; +1 FTE):

The \$1.7 million increase in HIP funding is being proposed for the Tiwahe sites to address the dilapidated and overcrowding conditions that exist in AI/AN communities across the nation. Providing adequate housing is an essential element in building stronger Indian families and Indian communities. The funding will increase the total number of eligible Indians participating in housing benefits. The funding will also be used to enhance the collaborative efforts with other federal housing programs to increase program benefits. Indian Affairs will be able to enrich its partnerships with the Department of Agriculture and the Department of Veterans Affairs which is geared toward increasing homeownership, repair and rehabilitation opportunities, and developing strategies for increased energy efficiency and sustainability of new housing on Indian lands.

Human Services Overview:

The Human Services activity consists of the following sub-activities: Social Services, Welfare Assistance, Indian Child Welfare Act (ICWA), Housing Program, Human Services Tribal Design, and Human Services Program Oversight. In addition, certain administrative costs are assessed in this activity to support government-wide, departmental, and BIA-wide functions performed at regional or central offices. Within the Social Services sub-activity, services are provided in the areas of family and domestic violence, child abuse and neglect, and protective services to Individual Indian Monies (IIM) supervised account-holders who are more at risk for exploitation including minors, adults in need, and adults under legal disability.

The BIA will continue its partnership with other Generation Indigenous funding sources. Specifically, the BIA will partner with the Indian Health Service (IHS), the Substance Abuse and Mental Health Services

Administration (SAMHSA), the Administration for Children and Families (ACF), and the Department of Justice (DOJ) on ICWA compliance and family & domestic violence related issues.

Subactivity - Social Services (TPA) (FY 2017: \$57,343,000; FTE: 130):

Program Overview:

Social Services funding supports tribally contracted and tribally compacted social services programs. Funding also supports BIA staff at the Regional Office and Agency levels. Social Services (TPA) funding is provided annually to approximately 300 Tribes, Tribal Consortiums, and BIA Agencies to support an array of social service activities that strengthen Indian families and promote family stability. Approximately 34 percent of the 300 Tribes are receive funding through an Indian Self Determination and Education Assistance Act (ISDEAA) Annual Funding Agreement (compact); the remaining 66 percent are either an ISDEAA Title I contract or BIA direct-service program. This funding supports tribal and BIA Social Service staff to manage applications for financial assistance, deliver critical child protective and adult protective services, provide child and family services including services to drug-affected children and families, and combat increasing rates of domestic and family violence in Indian country. Technical assistance and training is also provided to tribal contractors on regulatory issues. Social Services funding is used to fulfill the fiduciary responsibility of managing supervised Indian Individual Monies (IIM) accounts for minors, adults in need of assistance, adults under legal disability, and adults found not to be of sound mind.

Child Protection and Child Welfare Services: Social Services funding is used to support Tribal and BIA-operated Child Protection and Child Welfare Services (CPS/CW) on or near reservations and designated service areas. Tribal and BIA caseworkers are the first responders for child and family services on reservations in Indian country. CPS/CW work is labor intensive as it requires social service workers to frequently engage families through face to face contacts, assess the safety and risk of children, monitor case progress, and ensure essential services and support are provided to the child and family.

Family and Domestic Violence Services: To deter increasing rates of domestic and family violence in Indian country, BIA maintains a comprehensive plan for addressing the needs of Indian communities with high rates of domestic and family violence, and high incidences of child abuse and neglect. The plan focuses on strategies to expand family services related to domestic and family violence; improve teamwork between law enforcement and social services to more rapidly address instances of domestic and family violence; and improve coordination of services with other tribal, state, and federal partners on domestic and family violence initiatives and activities in Indian country. Moreover, the plan includes developing a gap analysis and best practices model; developing and organizing training; visiting Tribal domestic and family violence programs to learn more about their programs, and providing technical assistance to tribes operating a domestic violence or family violence prevention program.

Individual Indian Money Accounts: Social services staff manages approximately 720 supervised IIM accounts for minors, adults in need of assistance, adults under legal disability, and adults found not to be of sound mind. The staff works with families and guardians in the development of distribution plans and completes assessments and evaluations in support of those plans. The outcome of these actions results in accurate payments from trust accounts. Social Services staff is responsible for working directly with account holders and monitoring distribution plans to ensure expenditure of the funds is in accordance with

the approved plan. Additionally, social services workers work directly with account holders and guardians to ensure appropriate supportive documentation is maintained in the case file, and conducting annual reviews.

Program Performance:

In FY2015, four tribal communities were identified to participate in the Tiwahe project: the Ute Mountain Ute Tribe, Colorado, the Spirit Lake Tribe, North Dakota, the Association of Village Council Presidents (AVCP), Alaska, and the Red Lake Nation, Minnesota. Each of the four sites have the capacity to implement a demonstration project however, each community still faces a multitude of socio-economic conditions including high incidences of child abuse and neglect, unemployment, poverty, family instability, domestic crime, substance abuse, housing shortages/ homelessness, barriers to accessing appropriate services and/or barriers to providing counseling and treatment programs.

Each of the four Tiwahe sites received a 50% increase to their Social Services (TPA) reoccurring base funding level and a 50% increase to their Indian Child Welfare Act (ICWA) (TPA) reoccurring base funding level. Additionally, each Tribe received funding to support a Family Advocacy Coordinator position. The Family Advocacy Coordinator is a position that will be located at the tribe and is responsible for coordinating project goals and objectives with local tribal, federal, state partners and service providers to ensure the optimal level of services are provided. This individual is also responsible for providing technical assistance and training to tribal leaders, community members, and families; recruitment and staff retention planning; assisting with policy and protocol development; and assist with evaluation efforts to improve outcomes and/or strategies for more effectively serving tribal children, youth, and families.

Additionally, an 8% increase to existing base Social Services funding was distributed across the board to 308 tribes operating a social service program. It also provided a 21.5% increase to ICWA base funding that was distributed to approximately 360 ICWA tribal programs. These distributions begin to close the funding gap that has existed for so long for these two critical programs and allows those tribal programs that are waiting to be selected under the Tiwahe project to begin to address some needs within their human services programs until they have an opportunity to develop their comprehensive service model. It had been more than 15 years since the ICWA program had received any additional funding and there are Tribes who receive as little as \$110 yearly in ICWA base funding to provide intervention and prevention services that strengthen Indian families and communities.

Funds were used to develop and expand child and family service programs that prevent the breakup of Indian families and prevent the removal of Indian children. Such child and family service programs include but are not limited to:

- One Tribe reported being able to license and maintain an additional ten foster homes in FY 2015. The Tribe provided intensive in-home services to their families to strengthen the family unit.
- Some Tribes were able to hire more staff. These Tribal social services case workers were able to follow-up with families to ensure success of the family, following the reunification of the family with the child.
- One Tribe reported that their program was able to provide services in FY 2015 to an additional 26 families with the increase in funding from Social Services and ICWA.

Base Public Safety and Justice Funding

Bureau Location / Tribe	Program Operation	LE Offices	State	FY 2016 Est. Base Funding
<i>Criminal Investigations & Police Services:</i>				
OSG - Bois Forte Band (Nett Lake)	Tribe	137	MN	49,692
OSG - Cabazon Band of Mission Indians	Tribe		CA	208
OSG - Cherokee Nation	Tribe	138	OK	681,458
OSG - Chickasaw Nation	Tribe	139	OK	789,523
OSG - Chippewa-Cree Tribe	Tribe	140	MT	1,533,448
OSG - Choctaw Nation of Oklahoma	Tribe	141	OK	605,128
OSG - Citizen Potawatomi Nation	Tribe	142	OK	375,330
OSG - Confederated Salish And Kootenai Tribes	Tribe	143	MT	1,112,639
OSG - Confederated Tribes of Siletz Indians	Tribe	144	OR	93,080
OSG - Confederated Tribes of The Umatilla Res.	Tribe	145	OR	756,035
OSG - Coquille Tribe of Oregon	Tribe	146	OR	75,100
OSG - Duckwater Shoshone Tribe	Tribe	147	NV	119,085
OSG - Eastern Shawnee Tribe of Oklahoma	Tribe	148	OK	212,372
OSG - Ely Shoshone Tribe	Tribe	149	NV	138,563
OSG - Fond Du Lac Reservation Business Community	Tribe	150	MN	51,393
OSG - Gila River Indian Community	Tribe	151	AZ	6,253,846
OSG - Grand Traverse Band Ottawa/Chippewa Indians	Tribe	152	MI	366,525
OSG - Hoopa Valley Tribe	Tribe	153	CA	258,992
OSG - Jamestown S'kallam Tribal Council	Tribe	154	WA	228,624
OSG - Kaw Nation, Oklahoma	Tribe	155	OK	290,958
OSG - Kickapoo Tribe of Oklahoma	Tribe	156	OK	108,663
OSG - Kootenai Tribe of Idaho	Tribe	157	ID	22,987
OSG - Leech Lake Reservation Business Community	Tribe	158	MN	83,723
OSG - Little River Band of Ottawa Indians	Tribe	159	MI	418,801
OSG - Lower Elwha Tribal Community	Tribe	160	WA	223,675
OSG - Lummi Tribe	Tribe	161	WA	345,169
OSG - Makah Indian Tribe	Tribe	162	WA	451,813
OSG - Manzanita Band of Mission Indians	Tribe		CA	559
OSG - Metlakatla Indian Community	Tribe	163	AK	757,049
OSG - Miami Tribe of Oklahoma	Tribe		OK	144,832
OSG - Mille Lacs Band of Chippewa Indian	Tribe	164	MN	52,861
OSG - Muscogee (Creek) Nation, Oklahoma	Tribe	165	OK	620,375
OSG - Nisqually Indian Community Council	Tribe	166	WA	620,141
OSG - Ohkay Owingeh (formerly Pueblo of San Juan)	Tribe	167	NM	599,018
OSG - Oneida Tribe of Indians of Wisconsin	Tribe	168	WI	97,530
OSG - Osage Nation, Oklahoma	Tribe	169	OK	460,143
OSG - Port Gamble Indian Community	Tribe	170	WA	236,451
OSG - Pueblo of Jemez	Tribe	171	NM	521,467
OSG - Pueblo of Santa Clara	Tribe	172	NM	273,486

FY 2017 TPA - BASE FUNDING
(Dollars in Thousands)

NORTHWEST REGION														
PROGRAM TITLE	CHEHALIS	HOH	OUILLEUTE	COWLITZ	UMATILLA AGENCY	WARM SPRINGS AGENCY	WARM SPRINGS TRIBE	KLAMATH	BURNS PAIUTE	PUGET SOUND AGENCY	SAMISH	NOOKSACK	PUYALLUP	SAUK SIUATTLE
Aid to Tribal Government	111.944	16.194	66.547	353.087			140.420	668.053	33.841	178.913	372.133	55.437	47.384	
Consolidated Tribal Gov't Prqm-CTGP			1.974									24.028		161.577
New Tribes														
Road Maintenance														
TRIBAL GOVERNMENT	111.944	16.194	68.521	353.087			140.420	668.053	33.841	178.913	372.133	79.465	47.384	161.577
Social Services	58.449	11.344	95.074			260.751	99.288	148.933	97.336	76.661		20.948		
Indian Child Welfare Act	45.034	30.739	42.047				66.521	84.097	31.373			68.509		
Welfare Assistance														
Other, Human Services													83.919	
Housing Improvement Program														
HUMAN SERVICES	103.483	42.083	137.121			260.751	165.809	233.030	128.709	76.661		89.457	83.919	
Natural Resources, General		18.474	60.714		30.386			198.310	14.550			36.426	389.053	
Agriculture							1.626		15.492					
Forestry	33.597		12.433		213.549		19.261			184.921				
Water Resources							6.540							
Wildlife and Parks	135.904	22.122	17.229		2.982		4.967	772.994						
TRUST-RESOURCES MANAGEMENT	169.501	40.596	90.376		246.917		32.394	971.304	30.042	184.921		36.426	389.053	
Trust Services	0.366									5.754				
Rights Protection														
Real Estate Services						220.724			0.196	295.132				
Probate										83.855				
Environmental Quality Services														
Alaskan Native Programs														
TRUST-REAL ESTATE SERVICES	0.366					220.724			0.196	386.385				
Scholarships and Adult Education	19.233	11.208	34.212		0.477		11.722	519.254	30.627			21.772	39.355	
Johnson O'Malley	11.925		12.808				77.390		7.654			16.668		
Tribal Colleges and Universities														
EDUCATION	31.158	11.208	47.020		0.477		89.112	519.254	38.281			38.440	39.355	
Tribal Courts		10.543	181.799				20.349	3.685	70.459				194.996	
Community Fire Protection														
PUBLIC SAFETY & JUSTICE		10.543	181.799				20.349	3.685	70.459				194.996	
Job Placement & Training	17.542	1.949	38.678					3.573	13.401			13.759		
Economic Development	0.925						3.127	59.088						
Minerals and Mining														
COMMUNITY & ECON. DEVELOPMENT	18.467	1.949	38.678				3.127	62.661	13.401			13.759		
Executive Direction	23.197				258.775	117.599				127.150				
Administrative Services	28.395	4.608	3.189			231.548			7.187	18.060				
EXEC.DIRECTION & ADMINISTRATION	51.592	4.608	3.189		258.775	349.147			7.187	145.210				
** GRAND TOTAL **	486.511	127.181	566.704	353.087	506.169	830.622	451.211	2,457.987	322.116	972.090	372.133	257.547	754.707	161.577

* Does not include Internal Transfers or Fixed Cost Adjustments.

FY 2017 REGIONAL OPERATIONS FUNDING
(dollars in thousands)

PROGRAM TITLE	BUREAU TOTAL	NON-BASE RESOURCES	GREAT PLAINS REGION	SOUTHERN PLAINS REGION	ROCKY MOUNTAIN REGION	ALASKA REGION	MIDWEST REGION	EASTERN OKLAHOMA REGION	WESTERN REGION	PACIFIC REGION	SOUTHWEST REGION	NAVAJO REGION	NORTHWEST REGION	EASTERN REGION
Tribal Government Regional Oversight	5,704.127	0.379	861.079	320.187	376.195	642.820	580.183	269.911	723.765	293.099	418.067	560.298	276.487	381.657
Community Services, General	579.209		228.231	1.451		1.860					133.784	184.633		29.250
Aid to Tribal Government	946.584		221.374	114.844		104.892	114.909	53.665	39.394	97.178	7.150	151.198	29.064	12.916
Self-Determination	4,178.334	0.379	411.474	203.892	376.195	536.068	465.274	216.246	684.371	195.921	277.133	224.467	247.423	339.491
TRIBAL GOVERNMENT	5,704.127	0.379	861.079	320.187	376.195	642.820	580.183	269.911	723.765	293.099	418.067	560.298	276.487	381.657
Human Services Regional Oversight	2,214.370		203.761	186.820	239.289	282.859	143.978	113.491	164.681	127.444	161.245	340.062	134.799	115.941
Social Services	653.587		68.691	42.156	128.501	89.620	29.880		30.505	0.058	36.801	227.375		
Housing Development	1,560.783		135.070	144.664	110.788	193.239	114.098	113.491	134.176	127.386	124.444	112.687	134.799	115.941
HUMAN SERVICES	2,214.370		203.761	186.820	239.289	282.859	143.978	113.491	164.681	127.444	161.245	340.062	134.799	115.941
Resources Management Regional Oversight	4,242.769	0.027	385.395	129.786	380.060	111.063	414.274	108.153	639.439	231.594	358.403	549.462	643.036	292.077
Natural Resources	1,320.547	0.027	121.889	119.585	224.265		115.684	108.153	123.641	108.630	144.044	148.293		106.336
Agriculture	657.510		145.610				18.488		186.200			237.604	59.158	10.450
Forestry	1,248.411			1.683	81.563	101.645	204.653		174.672	122.964	42.497	137.572	226.420	154.742
Forest Marketing Assistance	93.600		2.543			6.340			34.329			25.993	20.540	3.855
Water Resources	582.177		69.650	8.518	74.232	3.078	50.437		120.597		128.366		110.605	16.694
Wildlife & Parks	340.524		45.703				25.012				43.496		226.313	
Minerals and Mining														
TRUST-NATURAL RESOURCES MANAGEMENT	4,242.769	0.027	385.395	129.786	380.060	111.063	414.274	108.153	639.439	231.594	358.403	549.462	643.036	292.077
Land Titles & Records	13,905.316	27.138	2,503.664	1,748.238	2,501.064	718.036	567.142	501.876		1,087.767	2,814.609		1,435.782	
Other Indian Rights Protection	169.188	0.000				46.379						67.233	55.576	
Trust Real Estate Svcs Regional Oversight	10,231.678	0.162	1,492.900	882.559	1,299.198	575.109	681.462		963.951	627.074	501.455	1,541.795	1,320.136	345.877
Trust Services	2,515.349	0.162	0.549	157.206	264.480	0.817	328.997		156.909	288.658	256.883	592.856	310.480	157.352
DRD-Trust Services	905.229		162.349	136.109	142.798	311.073			144.255	2.468			5.497	0.680
Other Real Estate Services	6,605.747		1,305.123	545.202	891.920	263.219	326.770		662.787	335.948	243.972	948.939	894.022	187.845
Environmental Quality Services	205.353		24.879	44.042			25.695				0.600		110.137	
TRUST-REAL ESTATE SERVICES	24,306.182	27.300	3,996.564	2,630.797	3,800.262	1,339.524	1,248.604	501.876	963.951	1,714.841	3,316.064	1,609.028	2,811.494	345.877
Land Records Improvement	1,939.000	1,230.021				708.979								
TRUST-REAL ESTATE SERVICES [No-Yr]	1,939.000	1,230.021				708.979								
Community Development Regional Oversight														
Economic Development														
Minerals and Mining Regional Oversight	891.139	505.540	1.732	41.535				57.911	171.384			51.993	61.044	
COMMUNITY & ECONOMIC DEVELOPMENT	891.139	505.540	1.732	41.535				57.911	171.384			51.993	61.044	
Executive Direction	3,143.327	0.000	440.212	302.615	225.017	211.765	120.447	237.617	218.696	294.609	153.445	180.061	389.861	368.982
Administrative Services	14,152.000	155.000	1,112.505	1,051.846	1,252.608	1,025.149	774.002	812.525	1,584.473	910.498	2,063.403	1,506.392	1,119.536	784.063
Regional Safety Management	916.410		122.103	89.945	90.602		89.984		89.932		90.816	144.737	104.413	93.878
EXEC DIRECTION & ADMINISTRATION	18,211.737	155.000	1,674.820	1,444.406	1,568.227	1,236.914	984.433	1,050.142	1,893.101	1,205.107	2,307.664	1,831.190	1,613.810	1,246.923
GRAND TOTAL	57,509.324	1,918.267	7,123.351	4,753.531	6,364.033	4,322.159	3,371.472	2,101.484	4,556.321	3,572.085	6,561.443	4,942.033	5,540.670	2,382.475

* Does not include Internal Transfers or Fixed Cost Adjustments.

Self-Governance Compacts Participation

Participation	FY 2008	FY 2009	FY 2010	FY 2011	FY 2012	FY 2013	FY 2014	FY 2015	FY 2016	FY 2017
Number of annual and multi-year self governance funding agreements	95	96	98	101	103	106	111	114	115 (Est.)	118 (Est.)
Number of Tribes covered under annual and multi-year self-governance funding agreements*	235	236	246	249	251	254	259	262	263 (Est.)	266 (Est.)
Obligations (\$000) awarded under annual and multi-year self governance funding agreements	405,770	416,122	419,372	436,083	410,734	402,159	442,196	440,623 (YTD)	440,000 (Est.)	445,000 (Est.)

* The number of annual and multi-year funding agreements differ from the number of participating Tribes since consortia of Tribes, specifically in the State of Alaska, have one agreement that serves numerous Tribes. The number of Tribes may vary during a given year and from one year to the next depending upon Tribal decisions to be included in or removed from consortia agreements.

Self Governance Tribes - Total Regions

Note: Tribal base amounts shown are from 15 Enacted levels; they do not include FY 2017 internal transfers and 2017 pay cost adjustments.

PROGRAM TITLE	FFS Code	Aleutian Pribilof Total Base	Asacarsarmiut Total Base	AVCP Total Base	Athabaskan Total Base	Barrow Total Base	Bristol Bay Total Base	Cheesh-Na Total Base	Chugachmiut Total Base
GSA Rentals - NON TPA	A3410	-	-	-	-	-	-	-	-
Central Office Operations - NON TPA	A5000	-	-	-	-	-	-	-	-
Executive Direction (Central) - NON TPA	A5100	-	-	-	-	-	-	-	-
Administrative Services - NON TPA	A5220	28,490	-	97,843	96	-	75,988	-	18,446
Executive Direction (Regional) - NON TPA	A6000	1,739	-	7,176	6	-	5,018	-	1,213
Executive Direction - TPA/Agency	A9010	8,371	-	35,215	45	-	22,839	-	5,391
Executive Direction - TPA/Region	A9010	-	-	-	-	-	-	-	-
Administrative Services - TPA/Agency	A9120	16,665	-	23,365	59	-	42,151	-	10,024
Economical Development - NON TPA	C6010	-	-	-	-	-	-	-	-
Job Placement and Training - TPA/Agency	C9035	-	-	-	-	18,172	-	-	-
Job Placement and Training - TPA/Region	C9035	7,088	-	27,441	-	4,620	17,267	-	3,907
Job Placement and Training - TPA/Tribal	C9035	79,266	10,587	163,973	-	68,884	190,504	-	39,748
Economic Development - TPA/Region	C9110	5,379	-	19,960	-	-	14,428	-	3,770
Economic Development - TPA/Tribal	C9110	-	4,070	49,748	-	-	10,512	-	-
Road Maintenance - TPA/Tribal	C9250	-	-	-	-	-	-	-	18,149
Education Line Officers - NON TPA	E5030	1,206	1,316	15,256	-	3,948	9,178	59	1,152
Johnson O'Malley - TPA/Agency	E9040	-	-	-	-	-	-	-	-
Johnson O'Malley - TPA/Tribal	E9040	7,878	29,381	166,378	-	95,027	137,299	1,934	31,800
Tribal Scholarships - TPA/Agency	E9310	-	-	-	-	7,819	-	-	-
Tribal Scholarships - TPA/Tribal	E9310	54,411	35,826	507,213	-	94,565	319,873	-	25,813
Tribal Adult Education - TPA/Agency	E9320	-	-	-	-	-	-	-	-
Tribal Adult Education - TPA/Tribal	E9320	-	598	7,939	-	-	4,381	-	-
Social Services - NON TPA	H6010	-	-	-	-	-	-	-	-
Housing Development - NON TPA	H6030	3,824	-	20,257	-	-	2,896	-	1,586
Social Services - TPA/Agency	H9010	5,205	-	-	-	7,262	13,432	-	2,694
Social Services - TPA/Region	H9010	60,623	-	209,670	-	30,144	141,394	-	30,570
Social Services - TPA/Tribal	H9010	26,115	5,553	91,446	-	63,325	12,652	-	12,824
Welfare Assistance - TPA/Tribal	H9130	-	-	-	-	-	-	-	-
Indian Child Welfare Act - TPA/Agency	H9220	-	-	-	-	372	-	-	-
Indian Child Welfare Act - TPA/Tribal	H9220	280,657	41,511	873,624	-	47,871	612,931	28,556	121,840
Housing Improvement Program - TPA/Tribal	H9370	-	-	417	-	-	-	-	-
Tribal Courts Programs - TPA/Tribal	J9080	-	2,206	26,732	-	-	-	-	-
Other, Public Safety and Justice - TPA/Tribal	J9090	-	-	-	-	-	-	-	-
Forestry (UTB) - NON TPA	N6A30	-	-	17,745	-	-	16,277	-	1,511
Water Resources (UTB) - NON TPA	N6A40	-	-	-	-	-	-	-	-
Natural Resources (UTB) - TPA/Agency	N9A05	-	-	-	186	843	-	-	-
Natural Resources (UTB) - TPA/Region	N9A05	2,134	-	10,634	-	1,944	6,199	-	1,480
Natural Resources (UTB) - TPA/Tribal	N9A05	-	9,551	160,574	-	-	44,158	538	42,588
Agriculture Program (UTB) - TPA/Agency	N9B10	-	-	-	-	-	-	-	-
Agriculture Program (UTB) - TPA/Region	N9B10	877	-	4,918	-	626	2,569	-	615
Agriculture Program (UTB) - TPA/Tribal	N9B10	-	2,466	44,707	-	-	-	-	-
Forestry Program (UTB) - TPA/Region	N9C30	-	-	46,791	-	108	86,413	-	58,308
Forestry Program (UTB) - TPA/Tribal	N9C30	-	-	-	-	-	-	-	-
Water Resources Program (UTB) - TPA/Tribal	N9D40	-	-	688	-	-	-	-	-
Wildlife & Parks Program (UTB) - TPA/Region	N9E50	921	-	3,691	263	627	2,667	-	646
Wildlife & Parks Program (UTB) - TPA/Tribal	N9E50	-	-	-	5,573	109,698	-	-	-
Real Estate Service Proj (UTB) - NON TPA	R3A00	-	-	-	-	-	(1,412)	-	-
Probate Backlog (UTB) - NON TPA	R5A10	-	-	-	-	-	-	-	-
Other Indian Rights Protection - NON TPA	R6020	41	-	18,311	-	1,097	9,390	-	732
Trust Services (UTB) - NON TPA	R6C10	-	-	-	-	-	-	-	-
Real Estate Services (UTB) - NON TPA	R6C40	50	-	42,614	-	-	34,381	-	821
ANILCA Programs - TPA/Region	R9050	2,137	-	264,250	-	8,514	147,536	-	7,019
ANILCA Programs - TPA/Tribal	R9050	-	477	105	-	-	-	-	-
ANCSA Historical & Cemetery Sites - TPA/Region	R9060	73,379	-	124,167	-	-	6,478	-	65,483
Rights Protection - TPA/Agency	R9120	-	-	-	-	-	-	-	-
Rights Protection - TPA/Region	R9120	1,131	-	104,413	-	4,141	24,487	-	36,669
Rights Protection - TPA/Tribal	R9120	-	-	-	-	-	-	-	-
Trust Services (UTB) - TPA/Region	R9A10	72	-	33,850	-	-	10,320	-	2,744
Trust Services (UTB) - TPA/Tribal	R9A10	-	766	2,634	-	-	-	-	-
Probate (UTB) - TPA/Region	R9B10	-	-	-	-	-	47,500	-	-
Real Estate Services Program (UTB) - TPA/Agency	R9C70	-	-	-	-	-	-	-	22,328
Real Estate Services Program (UTB) - TPA/Region	R9C70	121	-	128,779	-	-	50,647	-	3,474
Real Estate Services Program (UTB) - TPA/Tribal	R9C70	-	21,853	425,273	-	80,191	232,747	-	-
Real Estate Appraisals (Moved to OST) - TPA/Region	R9C80	-	-	52,944	-	-	-	-	-

2017 OSG Cumulative Base and Shortfall Base

Self Governance Tribes - Total Regions

Note: Tribal base amounts shown are from 15 Enacted levels; they do not include FY 2017 internal transfers and 2017 pay cost adjustments.

PROGRAM TITLE	FFS Code	Aleutian Pribilof Total Base	Asacarsarmiut Total Base	AVCP Total Base	Athabaskan Total Base	Barrow Total Base	Bristol Bay Total Base	Cheesh-Na Total Base	Chugachmiut Total Base
Real Estate Appraisals (Moved to OST) - TPA/Tribal	R9C80	-	-	120	-	-	-	-	-
Environmental Quality Program (UTB) - TPA/Region	R9D40	101	-	19,794	-	1,707	8,632	-	653
Environmental Quality Program (UTB) - TPA/Tribal	R9D40	-	-	-	-	-	-	-	-
Self-Governance Grants (Shortfalls) - NON TPA	T3300	-	-	-	-	-	-	-	-
Community Services, General - NON TPA	T6010	-	-	-	-	-	-	-	-
Other Aid to Tribal Government - NON TPA	T6020	1,587	-	7,919	-	-	5,014	-	1,368
Other Aid to Tribal Government - TPA/Agency	T9020	25,093	-	(1,026)	-	18,177	55,017	-	15,528
Other Aid to Tribal Government - TPA/Region	T9020	7,674	-	36,661	-	7,819	24,798	-	6,117
Other Aid to Tribal Government - TPA/Tribal	T9020	207,946	35,313	(31,011)	-	177,898	94,908	127,209	108,351
Consolidated Tribal Government Program - TPA/Agency	T9130	1,253	-	-	-	-	3,355	-	420
Consolidated Tribal Government Program - TPA/Tribal	T9130	37,266	-	363,058	-	-	-	3,438	-
Self-Governance Compacts - TPA/Tribal	T9240	(258,223)	(22,244)	(791,956)	(1,098)	(119,221)	(605,559)	(16,491)	(135,198)
TPA General Increase - TPA/Tribal	T9901	81,554	-	274,101	305	-	183,013	-	47,402
638 Pay Costs - TPA/Tribal	T9902	269,886	34,194	1,370,538	1,115	277,160	973,467	37,745	233,915
Retirement Adjustment - TPA/Tribal	T9903	-	-	-	-	-	-	-	-
Small and Needy Tribes Distribution - TPA/Tribal	T9904	892,306	-	1,449,232	-	-	1,564,381	-	207,443
Total Self-Governance Base		1,934,223	213,424	6,528,171	6,550	1,013,338	4,660,126	182,988	1,059,344