

HHS // IHS

# HIT MODERNIZATION PROJECT

Tribal Self-Governance Consultation Conference  
3/31/2019

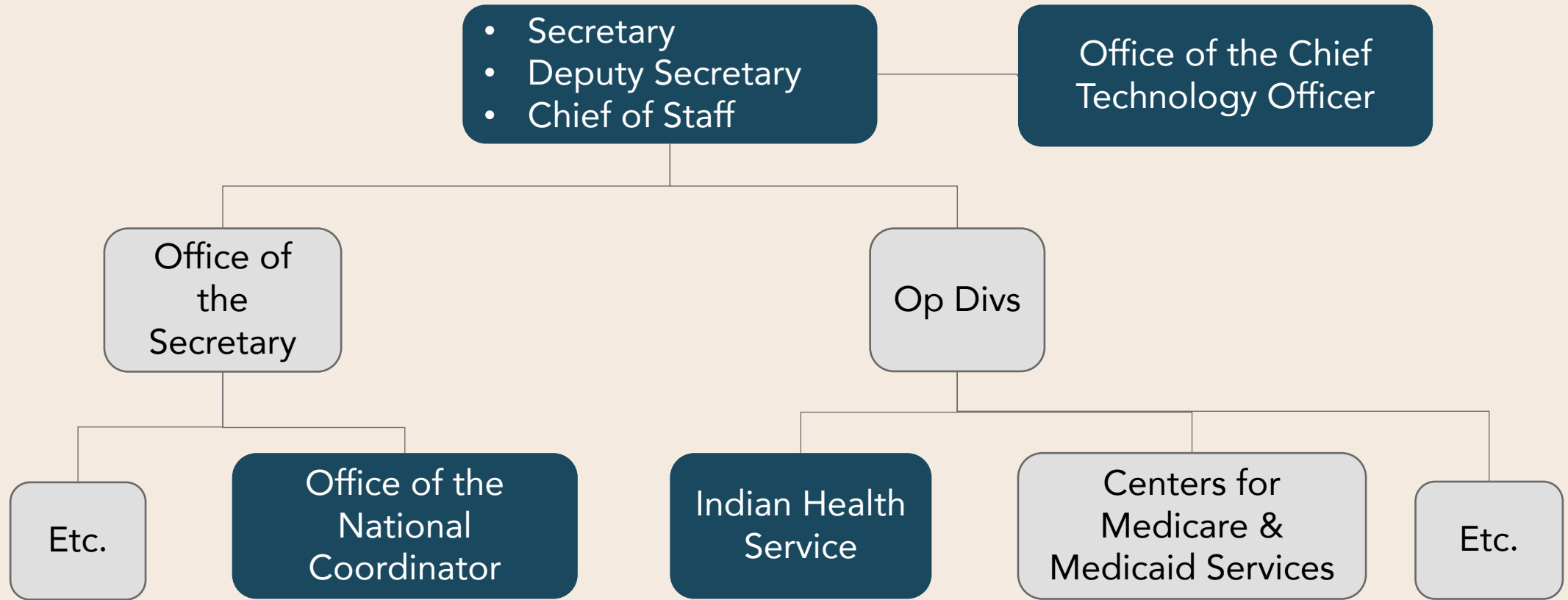
# Project **PURPOSE**

The HHS IHS HIT Modernization Project is sponsored by the U.S. Department of Health and Human Services Office of the Chief Technology Officer (HHS OCTO) in conjunction with IHS to provide an analysis and make recommendations to IHS concerning its approach to modernization of its Health Information Technology (HIT) systems.

In providing care to nearly 2.2 million American Indian and Alaska Native people nationwide, many IHS direct, Tribal and Urban sites (I/T/U) are aided by a comprehensive HIT system – the Resource and Patient Management System (RPMS). Others have opted to assume funding shares and purchase Commercial Off-The-Shelf (COTS) solutions.

This project is anticipated to be the first step of a multi-faceted project. This first phase aims to evaluate the current state of HIT across the I/T/U and identify alternatives to aid HHS, IHS, and tribal leaders in their future HIT decisions.

# HHS ORG CHART



\* Denotes Key Stakeholders directly influenced and/or impacted by the project.

# Project **OBJECTIVE**

This project is designed to help answer the question,

“What is the most appropriate next step in HIT modernization for IHS?”

By utilizing internal and external expertise informed by tribal leadership, we will identify and evaluate HIT solution options and provide guidance to IHS, HHS, and tribal leaders on next steps in the modernization process.

# Team **OVERVIEW**

- Department of Health and Human Services, *Office of the CTO*
- Indian Health Service (IHS)
- Office of the National Coordinator (ONC)
- Tribal Partners
- Site Personnel
- Emerging Sun, LLC
- Pistis, LLC
- Regenstrief Institute

# Guiding **PRINCIPLES**

## RESPECT

Honor and respect Tribal communities and stakeholders.

## PEOPLE - CENTERED

Leverage a human-centered design framework to determine what's most important to users.

## IMPACTFUL

Impactful decision making, community serving, evidence based, and incorporating a rigorous and repeatable process.

## DATA-DRIVEN

Analyze data collected in the field and through other IHS resources to inform decision making.



# PROJECT WORKSTREAMS

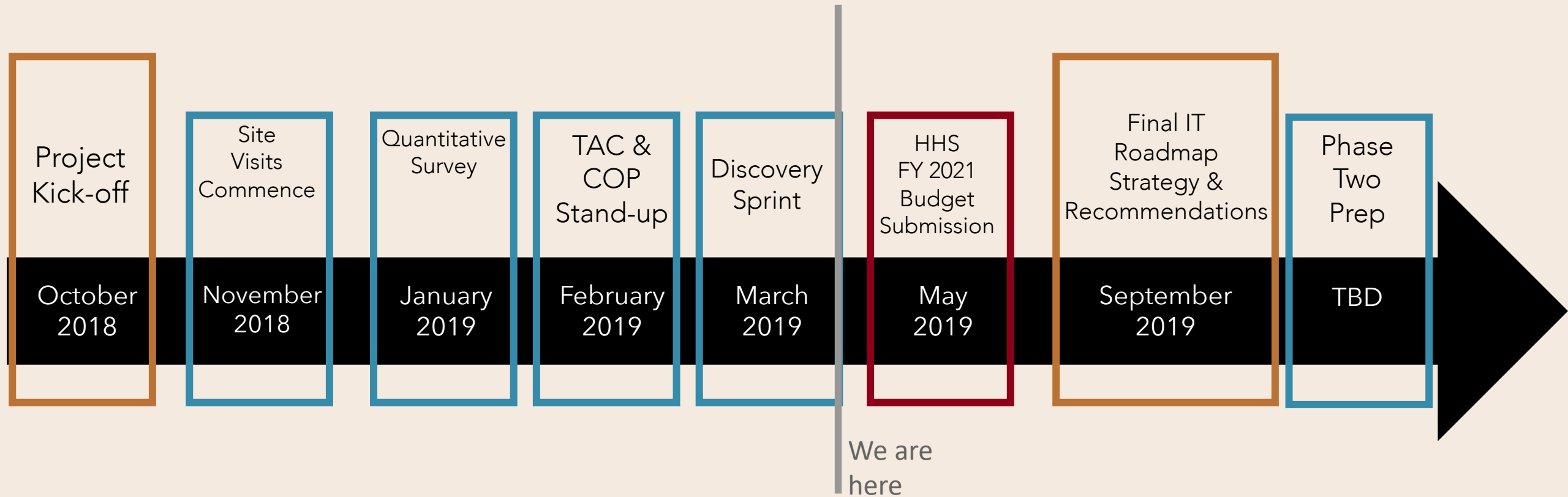
Workstream	Objective
Site Visits	<b>Qualitative Analysis:</b> Ensure that people have a voice through a Human-Centered Design methodology; End-user experience and impact of HIT systems on clinical care and performance.
Data Call	<b>Quantitative Analysis:</b> Questionnaire open to all I/T/U for input; results to be summarized and shared with project stakeholders.
Literature Review	<b>Academic:</b> Review publications about HIT use in resource-constrained area; results to be summarized and distribute findings to project stakeholders.
Legacy Assessment	Assess and evaluate current state of RPMS HIT in use at I/T/U sites. Summarize potential opportunities, implications, and requirements for modernization of RPMS.
Technical Advisory Commission (TAC)	Review all workstream data to produce recommendations for IHS EHR modernization to IHS leadership and relevant stakeholders selected by IHS and HHS leadership. Analyze technical review results and provide recommendations for future RPMS-EHR activities.
Community of Practice (COP)	Establish and provide a forum for personal and professional development around the effective use of EHRs in clinical- and community-based settings; Consulted with NIHB.
HIMSS	Create and deliver reports on the system-wide EMRAM/O-EMRAM assessments for HHS OCTO and IHS leadership. Facilitate an IHS-focused meeting and workgroup at the HIMSS 2019 Annual Conference.
Communications	Work directly with IHS Public Affairs and other experts to create, review, and facilitate project communications to internal and external stakeholders.

# PROJECT WORKSTREAMS - TOHP ENGAGEMENT

Workstream	Tribal Engagement
Site Visits	By May 15, five out of fourteen site visits will have occurred at TOHP.
Data Call	Distributed to I/T/U stakeholders through Area Director notification as well as list serves; data call currently open for contribution.
Literature Review	Included academic published literature independent of authorship.
Legacy Assessment	Technical evaluation of RPMS independent of facility.
Technical Advisory Commission (TAC)	TSG representative member (8 seats on the TAC including DST, TSG, Urban representatives).
Community of Practice (COP)	Consultation with NIHB to identify national committees/ groups for engagement; initial contacts in process.
HIMSS	Engagement at HIMSS.
Communications	Published web site for information.



# Phase One **TIMELINE**



# Listening **SESSIONS**

**1**

What does HIT modernization look like to you, your end users, or your tribal community?

**2**

What are the next steps for IHS for a successful HIT modernization effort?

# What To **EXPECT**

- Opportunity to have open dialogue about your needs for HIT
- Opportunities for one-on-one dialogue
- Note taking

# Today's **AGENDA**

<b>TIME</b>	<b>ACTIVITY</b>
12 - 12:30PM	Introductions & Project Overview
12:30 - 2PM	Open Forum Listening Session
2 - 2:15PM	Break
2:15 - 3PM	Small Group Listening Sessions



Feedback/Comments/Questions

**HITMODERNIZATION@EMERGINGSSUN.COM**

Project Website

**IHS.GOV/HIT**

Data Call

**is.gd/IHS\_modernization**